



**ALASKA DIVISION OF HOMELAND SECURITY &
EMERGENCY MANAGEMENT**
SITUATION REPORT 24-106 • April 15, 2024



Toll-Free 1.800.478.2337

Anchorage Area 907.428.7000

SEOC 907.428.7100

<p><u>SEOC Preparedness Level</u> Level 1 – Routine Operations.</p>	<p>http://ready.alaska.gov</p>	<p><u>National Terrorism Advisory System:</u> Read the NTAS Bulletin here</p>
<p><u>Maritime Security (MARSEC)</u> Level:1- Minimum Appropriate Security Measures</p>	<p>WHO Novel Coronavirus Pandemic (COVID-19): 2019 Novel Coronavirus</p>	<p><u>Alaska Military Installation Force Protection Level:</u> FPCON Bravo</p>

(Significant changes from previous situation reports are red.)

Significant Issues:

South Tongass Fire Station Fire:

Ketchikan Gateway Borough, City of Ketchikan, and City of Saxman declared a local disaster emergency on April 12, 2024 due to the South Tongass Volunteer Fire Department Building Fire. SEOC will work with Borough, City of Ketchikan and Saxman to document damages and support their request for state declaration.

Kivalina Structure Fire:

The state disaster for individual assistance hotline and website have opened for survivor registration. To apply for State of Alaska Individual Assistance, call 1-855-445-7131. Or apply online at ready.alaska.gov

State of Alaska Department of Health (DOH)

The DOH stands ready to assist with all aspects of public health and, in the event of a public health emergency, is supported by the SEOC and other state departments as required.

For current information, see: <https://health.alaska.gov/dph/Pages/default.aspx>
<https://health.alaska.gov/dph/Emergency/Pages/prepared/default.aspx>

NTAS Bulletin

The U.S. Department of Homeland Security issued an updated National Terrorism Advisory Bulletin on May 24, 2023. The current and expired bulletins can be viewed at the below link.
<https://www.dhs.gov/national-terrorism-advisory-system>

Travel Alerts and Conditions

For current driving conditions, dial 511 or visit: <https://511.alaska.gov/>

Barry Arm Landslide / Tsunami Risk

For the latest information on the Barry Arm Landslide and Tsunami risk, click here:

<https://dgggs.alaska.gov/hazards/barry-arm-landslide.html>

Earthquakes

United States Geological Service (USGS) Earthquake Information: <http://earthquake.usgs.gov/>

National Tsunami Warning Center: <http://tsunami.gov/>

Alaska Volcanoes

Great Sitkin Alert Level: **Watch** and Aviation Color Code: **Orange**

Shishaldin Alert Level: **Advisory** and Aviation Color Code: **Yellow**

For Alaska Volcano updates, go to: <https://www.avo.alaska.edu/>

Air Quality Index (AQI) Advisories

For the most up-to-date Air Quality Index Advisories:

<http://dec.alaska.gov/Applications/Air/airtoolsweb/Home/Index>

Spills of Oil and Hazardous Substances

Water Boil Notice:

Water boil notice for the city of and Kivalina

Drinking Water Health Advisory:

Drinking water health advisory for the city of Kotzebue

For more information: [Alaska DEC Drinking Water Boil Water Notices - Overview \(arcgis.com\)](https://arcgis.com)

The Alaska Division of Environmental Conservation (ADEC) Spill Prevention and Response page is located at:

<https://dec.alaska.gov/spar/>

Alaska Cyber Security Information

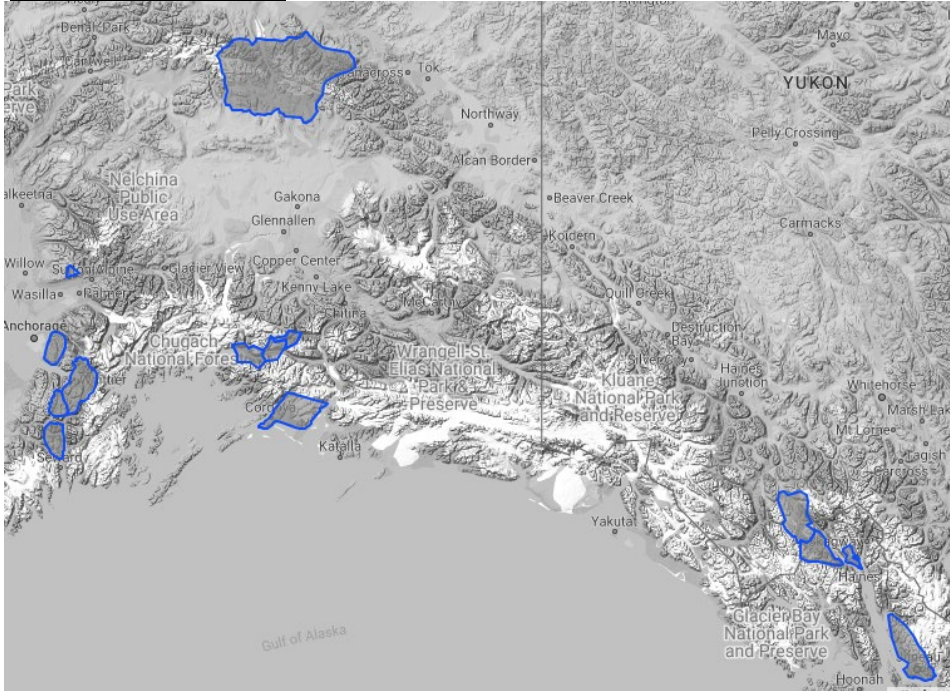
State Employees may sign up for cybersecurity notifications and alerts at

<https://oit.alaska.gov/security>

Cybersecurity and Infrastructure Security Agency (CISA)-Cybersecurity Services and Tools:

www.cisa.gov/free-cybersecurity-services-and-tools

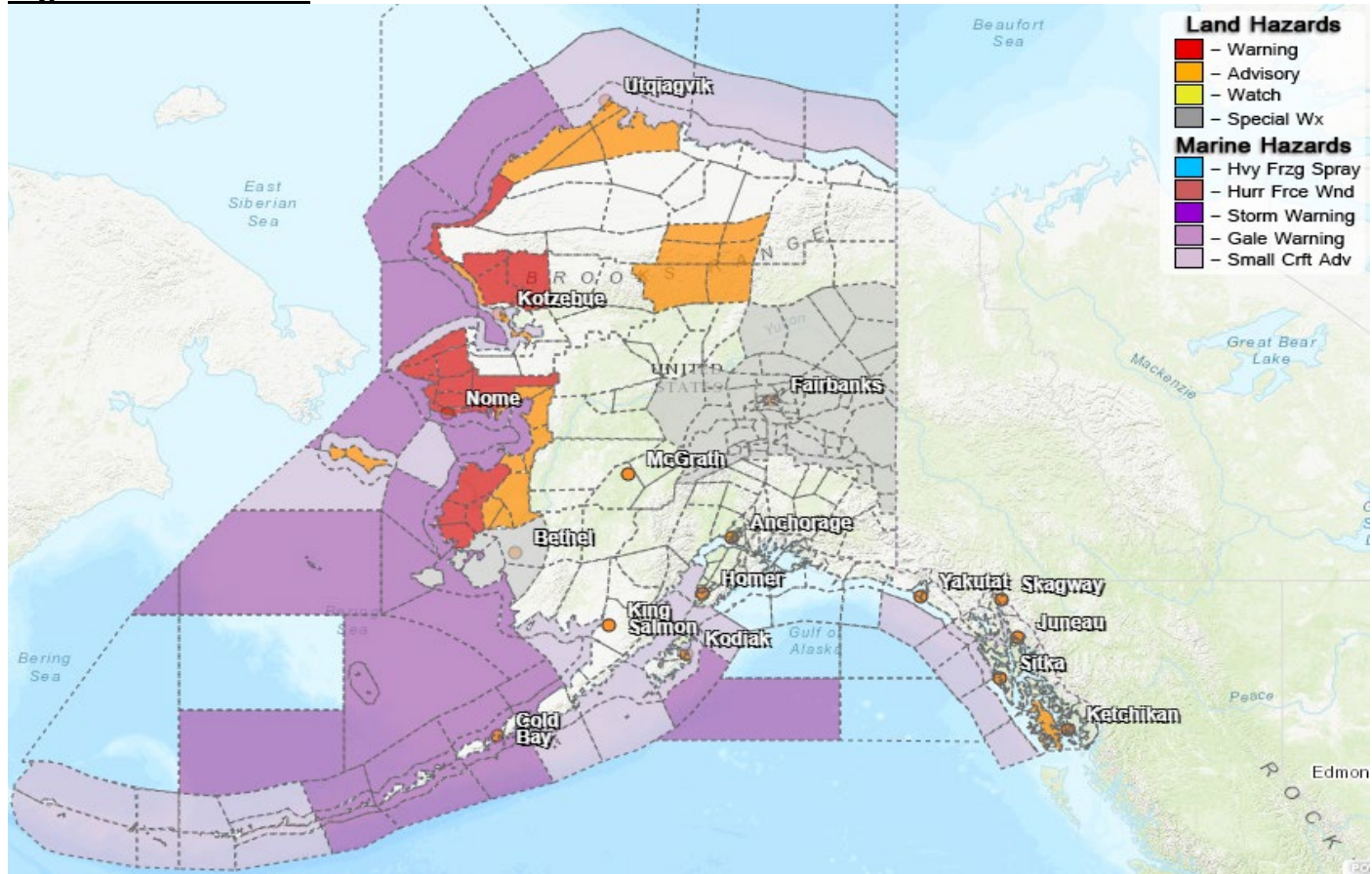
Avalanche Hazard



Travel in avalanche terrain is not recommended. Avoid being on or beneath all steep slopes.
Turnagain Pass- Moderate avalanche danger today

For information and the most current avalanche conditions, go to <https://alaskasnw.org>

Significant Weather:



For more information and the most current weather, Watches / Warnings / Advisories go to:

Special Weather Statement:

- **Yukon Flats, White Mountains and High Terrain South of the Yukon River; Fortymile Country; Upper Tanana Valley; Delta Junction; Upper Chena River Valley; Tanana Flats; Eielson AFB and Salcha; Goldstream Valley and Nenana Hills; Chatanika River Valley; Two Rivers; Fairbanks Metro Area; Nenana; Central Interior; Northern Denali Borough; Southern Denali Borough; Eastern Alaska Range North of Trims Camp; Eastern Alaska Range South of Trims Camp**- Spring time warm up later this week into weekend
- **Pribilof Islands, Kuskokwim Delta** -blowing snow ongoing Monday morning.

Winter Storm Warning:

- **Noatak Valley, Interior Seward Peninsula, Southern Seward Peninsula Coast**- until Tuesday night
- **Shishmaref, Bering Strait Coast, Yukon Delta Coast**-until noon Tuesday

Winter Weather Advisory:

- **Kivalina and Red Dog Dock, Easter Norton Sound and Nulato Hills, Central Brooks Range, St Lawrence Island** – until 6pm Tuesday
- **Northern Artic Coast**-until 10pm this evening

The Next Situation Report will be **April 16, 2024**. A significant change in the situation or the threat level will prompt an interim report. This report is posted on the internet at <https://ready.alaska.gov/sitrep>.

To register for email distribution, go to <http://list.state.ak.us/mailman/listinfo/dhsem.situation.report>. Direct questions regarding this report to the SEOC at 907-428-7100 or seoc@alaska.gov.